

TEKFALT

IS A BRAND OF MARINI MAKINA A.S.



PRODUCT CATALOGUE

www.tekfalt.com.tr - info@tekfalt.com.tr





Introduction

◆ MARINI MAKINA A.S.	04
◆ Polymer Modified Bitumen (PMB) Plant – modiFALT	06
◆ Bitumen Emulsion Plant – emulFALT	08
◆ Cold / Wet Mix Plant - coldFALT	10
◆ Tank, Piping and Bitumen Handling Systems – tankFALT	12
◆ PE & PMB Mixing Systems – mixFALT	14
◆ Thermal Oil Heater – heatFALT	15
◆ Drum Melting Unit – drumFALT	16
◆ Fiber Dosing System – fiberFALT	17
◆ Mobile Bitumen Park & Tank - mobilFALT	18
◆ Sprayer Tanker - sprayFALT	20
◆ Binding Agent Spreader – basFALT	21
◆ Bitumen Relay Tanker – transFALT	22
◆ Crack Repair Compound Boiler – crackFALT	23
◆ Asphalt Maintenance Vehicle – patchFALT	24
◆ Combi Asphalt Machine – combiFALT	25
◆ After Sales Services	26



TEKFALT

MARINI
FAYAT GROUP

MARINI MAKINA A.S.

Our company, which was founded under the name of “TEKFALT” in January 2009 in order to provide road construction machinery designs, production, consultancy, after sales support and spare part services, has become well known in both domestic and foreign markets thanks to our entrepreneurial and experienced team. Eventually, TEKFALT has become partners with Marini S.p.A, one of the leader asphalt plant manufacturer of the world, therefore the name of the company changed into MARINI MAKINA A.S. and joined FAYAT GROUP family.

This successful cooperation that we have achieved constitutes the basis of our robust organizational structure and sustainable growth, while we take stronger and more confident steps in the global market by increasing production diversity and quality. At this point, it is essential to respond quickly and accurately to increasing demands and to keep customer satisfaction at the top level. In addition, the name of TEKFALT is protected as a brand of MARINI MAKINA A.S. and the products of this group continue to be produced with high quality and reasonable cost.



We, as MARINI MAKINA A.S., continue to serve best quality and customer oriented service to our clients with more than 200 employees in our factory that has 25.000m² total area in which 13.450m² is under cover.

- ◆ 13.450m² Total Closed Area
- ◆ 25.000m² Total Area
- ◆ 2.000m² Closed Stock Area
- ◆ More Than 200 Employees





modiFALT



Polymer Modified Bitumen (PMB) Plants

MARINI modiFALT Polymer Modified Bitumen Plant (PMB) is the ideal solution for all road projects with its high mill performance, compact design, ease of use and economic operation features. With its high production capacity, modiFALT can meet the needs of all road, railway, airport projects and special applications which requires modified bitumen usage.

modiFALT40

Up to 40 t/h, thermal oil heated, works with 2 automatic polymer dosing systems, transportation with 2x 40' Flat Rack containers or 2 standard trailers



modiFALT30

Up to 30 t/h, thermal oil heated, works with 2 automatic polymer dosing systems, transportation with 2x 40' Open Top containers or 2 standard trailers



modiFALT20

Up to 20 t/h, thermal oil heated, works with 1 manual polymer dosing system, transportation with 1x 40' Flat Rack container or 1 standard trailer



modiFALT15

Up to 15 t/h, thermal oil heated, works with 1 manual polymer dosing system, transportation with 1x 40' Open Top container or 1 standard trailer





emulFALT



Bitumen Emulsion Plant

MARINI emulFALT is the reliable, highly efficient, compact, easy to use, economic bitumen emulsion plant which is engineered for bitumen emulsion production for all road construction projects, asphalt and other special emulsion applications.

emulFALT20

Up to 20 t/h, thermal oil heated, with double WAE tanks, transportation with 1x 20' Open Top container or 1 standard trailer



emulFALT15

Up to 15 t/h, thermal oil heated, with single WAE tank, transportation with 1x 20' Open Top container or 1 standard trailer



emulFALT10

Up to 10 t/h, thermal oil heated, with single WAE tank, transportation with 1x 20' Open Top container or 1 standard trailer





- ◆ Designed and produced by MARINI MAKİNA, emulFALT's 30kW colloid mill guarantees perfect results that can provide <math><2-6\mu\text{m}</math> particle size by adjustable gap setting between discs (even with 50/70pen bitumen)
- ◆ Thermal oil heated mill, bitumen pump, bitumen valves and piping trouble-free production and transfer
- ◆ Bitumen flowmeter can be optionally added to the bitumen feed line of the mill
- ◆ Trouble-free production for many years with stainless steel water-acid-emulsifier (WAE) tank, thermostatic controlled stainless steel internal heating coils and loadcell integrated weighing system
- ◆ Long-lasting water-acid-emulsifier (WAE) pump which is suitable for working with acidic liquids allows real capacity control
- ◆ Divided inlet for WAE and bitumen at the colloid mill in order to prevent foaming
- ◆ Optional; kerosene dosing system (gear type kerosene pump with ex-proof electric motor including flowmeter) and specially designed static mixer for premixing
- ◆ Optional; latex dosing system for related applications
- ◆ Ease of operation with continuous control via bitumen, WAE and kerosene flowmeters in accordance with receipt-based manufacturing
- ◆ Drum type pump which resistant to HCl acid
- ◆ Container type compact design for easy transport and installation



coldFALT



Cold/Wet Mix Plant

MARINI coldFALT Cold Mix Plant, which is designed for mechanical stabilization, cement stabilization and cold asphalt mixtures, always runs smoothly even on the most challenging projects.

coldFALT800

Mechanical stabilization (water + aggregate), cement stabilization (water + aggregate + cement) and cold mix asphalt (emulsion + aggregate - water, cement, reclaimed asphalt on demand) transport via standard trailer, the number of vehicles vary according to options

→ 800 t/h

coldFALT600

Mechanical stabilization (water + aggregate), cement stabilization (water + aggregate + cement) and cold mix asphalt (emulsion + aggregate - water, cement, reclaimed asphalt on demand) transport via standard trailer, the number of vehicles vary according to options

→ 600 t/h

coldFALT400

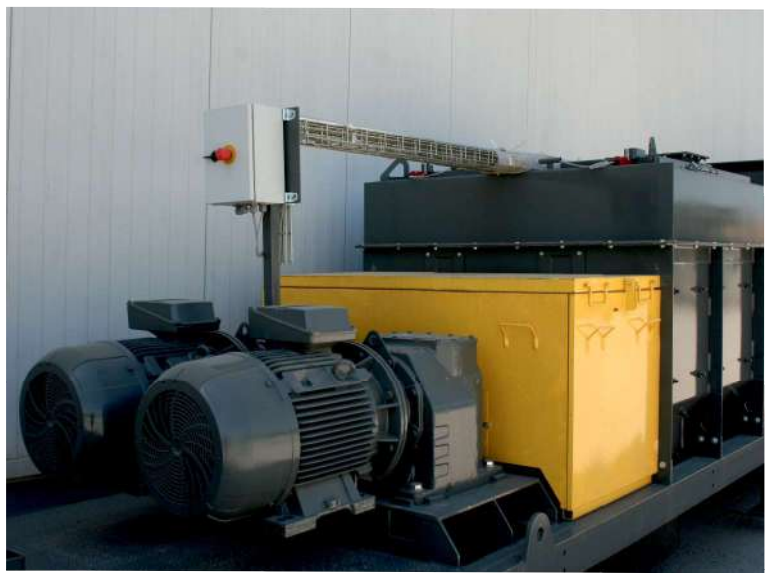
Mechanical stabilization (water + aggregate), cement stabilization (water + aggregate + cement) and cold mix asphalt (emulsion + aggregate - water, cement, reclaimed asphalt on demand) transport via standard trailer or 40' Open Top container, number of vehicles/containers vary according to options

→ 400 t/h

coldFALT200

Mechanical stabilization (water + aggregate), cement stabilization (water + aggregate + cement) and cold mix asphalt (emulsion + aggregate - water, cement, reclaimed asphalt on demand) transport via standard trailer or 40' Open Top container, number of vehicles/containers vary according to options

→ 200 t/h



- ◆ Different capacities of plants in the range of 200-800 t/h, in order to respond to different needs of road, railway, airport projects
- ◆ Production of mechanical stabilization, cement stabilization and emulsion cold asphalt mixtures in excellent quality
- ◆ Specially designed twin shaft mixer for perfect mixing quality
- ◆ coldFALT has been designed for production of various cold/wet mixtures with aggregate, water, cement, reclaimed asphalt, bitumen emulsion and foam bitumen
- ◆ Thanks to its standard production, coldFALT mixer which has arms, paddles and body parts with bolted anti-wear components, provides continuous spare part support and easy replacement of wearing parts
- ◆ Dosing belt flow sensors stop the system automatically when aggregate feeding is interrupted
- ◆ Capacity of dosing belts, ratio of cement, bitumen emulsion in the mixer can be adjusted from control cabin via frequency converter
- ◆ Full automatic control of production with optional PLC + computer control system, as well as the storage and reporting of all production data
- ◆ Compact design fits into 40' Open Top container (only the plants with 200 and 400 t/h capacity) which provides easy transportation with reasonable costs



tankFALT



MARINI
FAYAT GROUP

Tank, Piping and Bitumen Handling Systems

MARINI tankFALT Tank, Piping and Bitumen Handling Systems are the most suitable equipment for all kinds of storage and service applications with their fast heating, high efficiency, economic operation and quality workmanship.

Tanks, in which bitumen, PMB, emulsion, fuel oil, diesel and other similar materials are stored, can be produced at desired capacities in compliance with your project needs.

These tanks' specifications are flexible, high quality and long lasting in terms of heating surface areas, insulation and similar options. Additionally, we can meet your high capacity bitumen stock requirements with big storage tanks and bitumen pools built on site.

TYPE	CAPACITY - TRANSPORTATION	HEATING
Horizontal Tanks	38m ³ - 40' Open Top Container	Thermal Oil or Electric
	50m ³ - Standard Trailer	
	100m ³ - Mega Trailer	
Vertical Tanks	50m ³ - Standard Trailer	Thermal Oil or Electric
	80m ³ - Mega Trailer	



- ◆ Horizontal or vertical, electrically or thermal oil heated design and production according to your needs
- ◆ Horizontal or vertical tanks can be equipped with agitators according to project requirements
- ◆ Pressure and leakage tests are applied to all produced tanks as well as required quality documentation is available
- ◆ Heating coils of our thermal oil heated tanks consists of high quality rolled steel
- ◆ High quality bitumen pumps, valves and equipment are used in our installations
- ◆ Optional; thermostatic control system can be added to the tanks
- ◆ Optional; the weighing system with loadcell allows precise weighing of materials in the tank
- ◆ Optional; maximum-minimum or continuous level sensors





mixFALT



MARINI
FAYAT GROUP

PE & PMB Mixing Systems

TEKFALT mixFALT is a versatile mixing system that offers functional flexibility with wide variety of options for different applications and especially designed for bitumen modifications with additives such as Elvaloy, powder SBS etc. where any milling process is not needed.

- ◆ Precise weighing of the material in the tank with loadcell option
- ◆ Easy filling of the additive materials from the manholes and loading points through walking paths above the tank
- ◆ Solid or fluid additive feeding hoppers and manual – automatic dosing systems according to the application
- ◆ High agitation performance thanks to flexible number of agitators and motor power
- ◆ High quality bitumen pumps, valves and equipment in piping
- ◆ Optional; thermostatic control system for tanks
- ◆ Optional; maximum-minimum or continuous level sensors



heatFALT



MARINI
FAYAT GROUP

Thermal Oil Heater

MARINI heatFALT Thermal Oil Heater is an essential part of your asphalt plants and bitumen handling systems with its high efficiency, compact design, ease of use and low fuel consumption.

heatFALT100

→ 1.000.000 kCal/h

heatFALT80

→ 800.000 kCal/h

heatFALT50

→ 500.000 kCal/h

heatFALT30

→ 300.000 kCal/h

- ◆ Engineered to work at closed loop thermal oil heating systems under atmospheric pressure where oil heated up to 250°C and circulated with pump
- ◆ Double helix heating coil design ensures long term operation and quality without any thermal cracking of the oil
- ◆ Suitable for all types of commercial burners such as diesel, fuel-oil, natural gas and combi through the large combustion chamber
- ◆ Burner can be replaced without any need of cable connection thanks to its plug-in-socket design
- ◆ Long term operation with high capacity ALLWEILLER brand thermal oil circulation pumps
- ◆ Safe operations via digital thermostatic controller for controlling oil temperature at oil inlet and outlet
- ◆ Flow and pressure safety with differential pressure switch at oil inlet and outlet pipes
- ◆ Compact design ensures easy transfer (can fit into 20' OT container) and assembly



drumFALT



MARINI
FAYAT GROUP

Drum Melting Unit

TEKFALT drumFALT is the reliable, highly efficient, compact and environmentally friendly drum melting unit for your bitumen handling systems.

drumFALT30

3 x 10 = 30 drum capacity
6-9 t/h capacity according to worksite conditions
Transport via 1x 40' Flat Rack container or 1 standard trailer

→ 30 drums

drumFALT20

2 x 10 = 20 drum capacity
4-6 t/h capacity according to worksite conditions
Transport via 1x 40' Open Top container or 1 standard trailer

→ 20 drums

- ◆ 20 – 30 drums can be loaded according to the model
- ◆ Also used for melting the other highly viscous fluids (i.e. PMB) in all standard drums
- ◆ Thermal oil heated helical gear bitumen pump and filter integrated to system
- ◆ Hydraulic lifting system ensures easy and fast loading of drums
- ◆ High capacity heating coil design ensures fast melting
- ◆ Thanks to insulation with thick rockwool and sheet aluminum, heat loss is minimized
- ◆ Optional; uninterrupted operation with level indicator system
- ◆ drumFALT also has an integrated configuration with thermal oil heater, heatFALT, which both installed on a single chassis and can be transferred via 40' Open Top container



fiberFALT



MARINI
FAYAT GROUP

Fiber Dosing System

MARINI fiberFALT Automatic Fiber Dosing System is a practical solution with its compact design and adaptability to all asphalt plants.

- ◆ An indispensable dosing system which must be used in Stone Mastic Asphalt (SMA) production for high quality roads
- ◆ Compact design allows easy adaptation and usage for all asphalt plants
- ◆ Its weighing and dosing system works precisely in spite of plant vibrations thanks to durable chassis design



mobilFALT



MARINI
FAYAT GROUP

Mobile Bitumen Park & Tank

MARINI Mobile Bitumen Stocking Systems are the ideal solution for the mobile asphalt plants and other special applications.

Specially designed mobile bitumen park is integrated with 55m³ capacity bitumen tank and 500.000kCal/h capacity thermal oil heater and can be transferred smoothly thanks to its dimensions which allows it to fit exactly into mega trailer. A mobile bitumen storage tank for extra bitumen stock without thermal oil heater configuration is also available. Optionally, there is a double compartment mobile tank configuration that can store bitumen and fuel at once (diesel, fuel-oil etc.) is available for production.



- ◆ mobilFALT can be mounted on a mega trailer with its compact design
- ◆ 55m³ capacity bitumen tank according to the customer request
- ◆ 500.000kCal/h capacity integrated thermal oil heater according to the customer demand
- ◆ Flex pipe connections between tanks for maximum mobility at the worksite
- ◆ With bitumen pump 3-way valve to feed asphalt plant and circulation pump are installed on the chassis
- ◆ Embedded type bitumen pump which has two 3-way bitumen valves integrated to the tank allows:
 - Sucking bitumen from the bitumen tanker
 - Bitumen transfer between tanks
 - Bitumen tanker loading from the tanks
 - Bitumen circulation for PMB applications



sprayFALT

Sprayer Tanker

TEKFALT sprayFALT Sprayer Tanker guarantees precise, safe and easy spraying applications of bitumen and bitumen emulsions while providing rapid and high heating performance with an integrated thermal oil heater. Thermal oil circulation in the system eliminates the necessity of cleaning the system as well as prevents clogging, freezing of materials in spray bars, bitumen pumps, valves and piping system.

- ◆ Bitumen / emulsion tank capacity from 4.000 up to 16.000 liter depending on vehicle dimensions
- ◆ Long lasting, trouble-free usage period with an integrated high quality thermal oil heater, bitumen pump, valves and equipment
- ◆ Capacity adjustable bitumen pump, driven by the hydraulic motor that coupled with a variable displacement hydraulic pump connected to vehicle PTO
- ◆ Foldable and height adjustable thermal oil heated spray bars have the ability of sensitive spraying
- ◆ Sensitive spraying from 200g/m² to 4kg/m² with specially designed spray bar and spray nozzles
- ◆ Fully circulated spray bar ensures the material is equally distributed from both sides of the spray bar to assure perfect homogeneity
- ◆ With the LCD display control unit in the drivers cabin, vehicle speed, pump flow rate and sprayed amount can be easily tracked and operation parameters can be easily adjusted
- ◆ Full automatic dosing system adjusts the required amount sprayed as lt/m² independent of the truck speed and spraying width
- ◆ Optional; high-pressure diesel burners in the range of 14-26kg/h
- ◆ Optional; external diesel engine for vehicles without PTO



basFALT

Binding Agent Spreader

TEKFALT basFALT Binding Agent Spreader is the machine that you need for surface stabilization. Thanks to its automatic control system, this mobile spreader ensures that the filler, cement, lime etc. powder materials spread on the surfaces at desired amount. Its functional design guarantees the best spreading performance as well as easy use.

- ◆ Spreader consist of 3 spreading feeders which can be separately operated, allows users to work with different spreading widths
- ◆ Proportional control system provides automatic capacity control (lt/m²) for spreading operation independent from vehicle speed and spreading width
- ◆ Material filling with bulk cement trailers or optional filling with bigbags
- ◆ Water-proof and damp-proof design prevents humidity of the material in the tank
- ◆ Easy and user friendly operation with specially developed LCD screen operators panel



transFALT

Bitumen Relay Tanker

TEKFALT transFALT Bitumen Relay Tanker is the best functional solution with its various capacities according to your requirements and optionally heating and pumping systems, for hauling bitumen, PMB, emulsion and other similar materials.

- ◆ Tank capacity from 20.000 liter up to 40.000 liter depending on vehicle dimensions
- ◆ Depends on request, pump and burner options are available
- ◆ For easy filling, dual manholes on front and rear of the tank and special heat resistant ball type discharge valve
- ◆ With the pumping system option, by the virtue of a 4-way valve; discharge, tank filling and circulation within the tank is possible
- ◆ Diesel burner with thermostatic control system (capacity between 14-26kg/h) for heating option
- ◆ Optional; agitators for PMB transfers
- ◆ Optional; compatible design with machines capable of asphalt stabilization with foam bitumen or bitumen emulsion, such as MPH



crackFALT

Crack Repair Compound Boiler

TEKFALT crackFALT is the reliable solution for all crack repair projects of road, railway and airport with its high performance, ease of use, affordability and compact design. crackFALT can meet all the needs of projects with all scale and characteristics with 300 & 500 liter capacity and various equipment options.

- ◆ Mastic melting tankers with 300 & 500 liter capacity
- ◆ Heating system alternatives for mastic tanks with burner direct heating and/or thermal oil heating
- ◆ Fast melting grid is located on the inlet of thermal oil heated mastic tanks
- ◆ Speed regulated agitators for mastic melting tank with hydraulic motor drive
- ◆ Single or double axle chassis depends on capacity
- ◆ Smooth and fast operation with thermal oil heated lance
- ◆ Lance design which allows both smoothing and injection
- ◆ In addition to unloading the lance with 2-way bitumen pump, cleaning of the lance and its circulation pipe by compressed air and diesel is also possible with optional equipment



patchFALT

Asphalt Maintenance Vehicle

TEKFALT patchFALT Asphalt Maintenance Vehicle is used for repair & maintenance of roads. Optional feeding screw increases production capacity during operation with practicality it provides. patchFALT is flexible, easy to use and the best practical solution for road patching and pothole repair applications with its wide range of options.

- ◆ Robust and compact design with optionally heated silo which is isolated, v-shaped, hydraulic gated and in different capacities that vary according to vehicle dimensions
- ◆ Continuous material feeding with capacity controlled material flow and hydraulic screw system with adjustable speed
- ◆ Optionally; manual emulsion / bitumen spraying system with hand lance can be added
- ◆ High quality hydraulic system, screws and equipment ensure trouble free and long term operation
- ◆ Customizable configuration with auxiliary equipment that can be added on request
- ◆ Optional; thermal oil or direct burner heating system



combiFALT

Combi Asphalt Machine

TEKFALT combiFALT Combi Asphalt Machine is combination of bitumen sprayer, hydrostatic road sweeper and water sprayer. It is easy to use with a single control panel from driver cabin. The integration of different applications into one machine enables you to save considerable amount of initial investment and operation costs.

- ◆ Sprayer capacity, vehicle speed, pump flow rate, sweeping speed, water pump capacity and other variables can be traced and regulated from the control panel in the driver cabin
- ◆ Emulsion and water tank capacity vary according to vehicle dimensions
- ◆ Optimized design for daily emulsion consumption of hot mix asphalt applications
- ◆ All options for the bitumen sprayer are also available
- ◆ Front and rear water sprayer
- ◆ Integrated pump and hose for daily water needs of cylinders, pneumatic tyred roller and milling machine used in hot mix asphalt applications

Service

Expertise and professionalism of the MARINI MAKINA team is the core of service, perfectly integrated in our CUSTOMER SUPPORT program, with the aim of creating an ongoing relationship of excellence.

We provide support with prompt efficiency, competence and knowledge support to the customers' plants all over the world.



Spare parts

Thanks to the experience accumulated over many years and the expertise of its staff, MARINI MAKINA is in a position to meet the requirements of all customers.

The company can trace and supply spare parts and other equipment also for plants which are out-of-production and when this is not possible our experts can always provide the best alternative technical solutions.

Remember only genuine original MARINI and TEKFAIT spare parts and accessories guarantee reliability and high performance to your asphalt plant.



Training

Well prepared and competent staff guarantee the productivity and reliability of the plant. This is why we have designed a package of four different training programs, implemented in the new Training Academy or directly on site.

MARINI training program:

- ◆ Bring the plant up to current emission and eco-standards
- ◆ Integration of recycling systems and other applications
- ◆ Implement modern technologies for warm mix asphalt
- ◆ Integration of stone mastic asphalt production





MARINI, fra

FAYAT GROUP



- ◆ Export to 55 Country
- ◆ 25.000 m² Production Area
- ◆ More Than 200 Employees



Sprayer Tank



Thermal Oil Heater



Polimer Modified Bitumen Plant

From Ankara to World



Bitumen Relay Tank



Drum Melting Unit



Cold / Wet Mix Plant



Bitumen Emulsion Plant



Mobile Bitumen Park & Tank



Tank, Piping and Insulation Systems

TEKFALT

IS A BRAND OF MARINI MAKINA A.S.

TEKFALT

IS A BRAND OF MARINI MAKINA A.S.





MARINI

FAYAT GROUP



Marini Makina A.Ş.

1. OSB Kırım Hanlığı Cad. No: 1
06935 Sincan, Ankara / TÜRKİYE

T: +90 312 386 33 22

F: +90 312 386 33 23

Coordinates:

39.967166, 32.552128



TEKFALT IS A BRAND OF MARINI MAKINA A.Ş.